

62

[1957]

FR

SELECT FRUIT AND NUT TREES

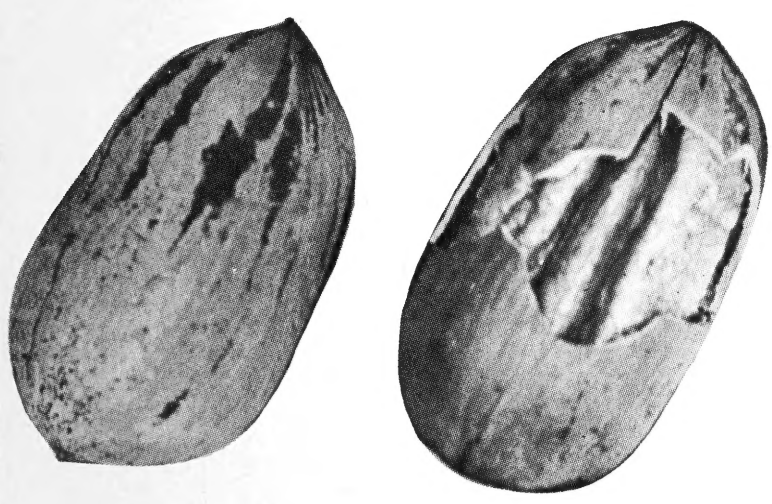
MONTICELLO NURSERY COMPANY

LIBRARY
RECEIVED
★ MAR 13 1957 ★
U. S. Department of Agriculture

Announces

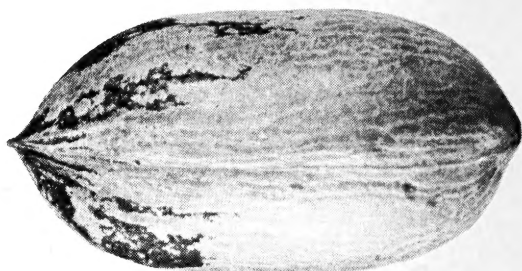
a new giant pecan - the

MAHAN-STUART



MONTICELLO NURSERY CO.
Monticello, Florida

Here is the NEW MAHAN-STUART



Mahan-Stuart—Actual Size

The new MAHAN-STUART is *outstanding* in size and appearance. A cross between two of the best-known and best producing varieties, the Mahan gives it size and the Stuart fills it out. The shell is thin, considerably thinner than the Stuart, and just a little thicker than the Mahan. The length is 2 to 2¼ inches, and it is about 4 inches around. It is the *biggest* pecan we have seen, and we have selected MAHAN-STUART pecans that ran only *26 to the pound*.

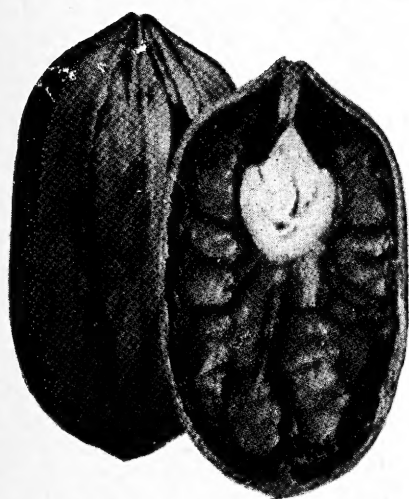
The MAHAN-STUART is a *patented* variety, under the Plant Patent Act. No other nursery or person can grow these for sale, and the name MAHAN-PECAN is also *Copyrighted*, and registered as our trademark. All orders for MAHAN-STUART trees will be shipped *direct* from the Monticello Nursery Company at Monticello, Florida.

PRICES on MAHAN-STUART Trees

| | |
|-----------------------------------|--------|
| 1 to 2 ft..... | \$1.50 |
| 2 to 3 ft..... | 2.50 |
| 3 to 4 ft..... | 3.50 |
| 4 to 5 ft..... | 4.50 |
| 5 to 6 ft..... | 5.00 |
| 6 to 8 ft..... | 5.50 |
| Extra Large 8-10 ft. size..... | \$7.00 |

**All Prices F.O.B.
Monticello, Fla.**

The 3 varieties of pecans listed on these pages, the MAHAN, the STUART and the MAHAN-STUART, are the ones which we find to be the most profitable to grow. They are large to extra large, bear heavy crops, and sell at the top of the market. You will find pecans will pay you well for many, many years, and will take less time to handle than almost any other crop.



Stuart

STUART

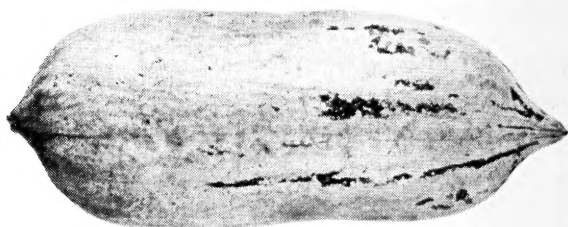
The STUART variety is probably the most widely planted variety, and does well anywhere that pecans are grown. Shell of medium thickness, always well filled and sells well too.

Prices on STUART pecan trees:

| | |
|--------------------|--------|
| 18 to 24 inch..... | \$1.25 |
| 2 to 3 ft..... | 1.50 |
| 3 to 4 ft..... | 2.00 |
| 4 to 5 ft..... | 2.50 |
| 5 to 6 ft..... | 3.00 |
| 6 to 7 ft..... | 4.00 |

You Can Grow the World's Finest Pecans in Your Yard

MAHAN — The World's Finest Pecan



Mahan—Actual Size

The Mahan is the world's top pecan. It is a quick-growing tree, with large leaves, making a splendid shade tree and an ideal specimen tree for your yard.

The nuts are so large, the shells are so thin, and the meats are so delicious that every home should have a few trees.

Commercially it is a money-maker, as production starts early and is very heavy. The mammoth nuts bring top prices because of their size and quality, characters which do not always go together.



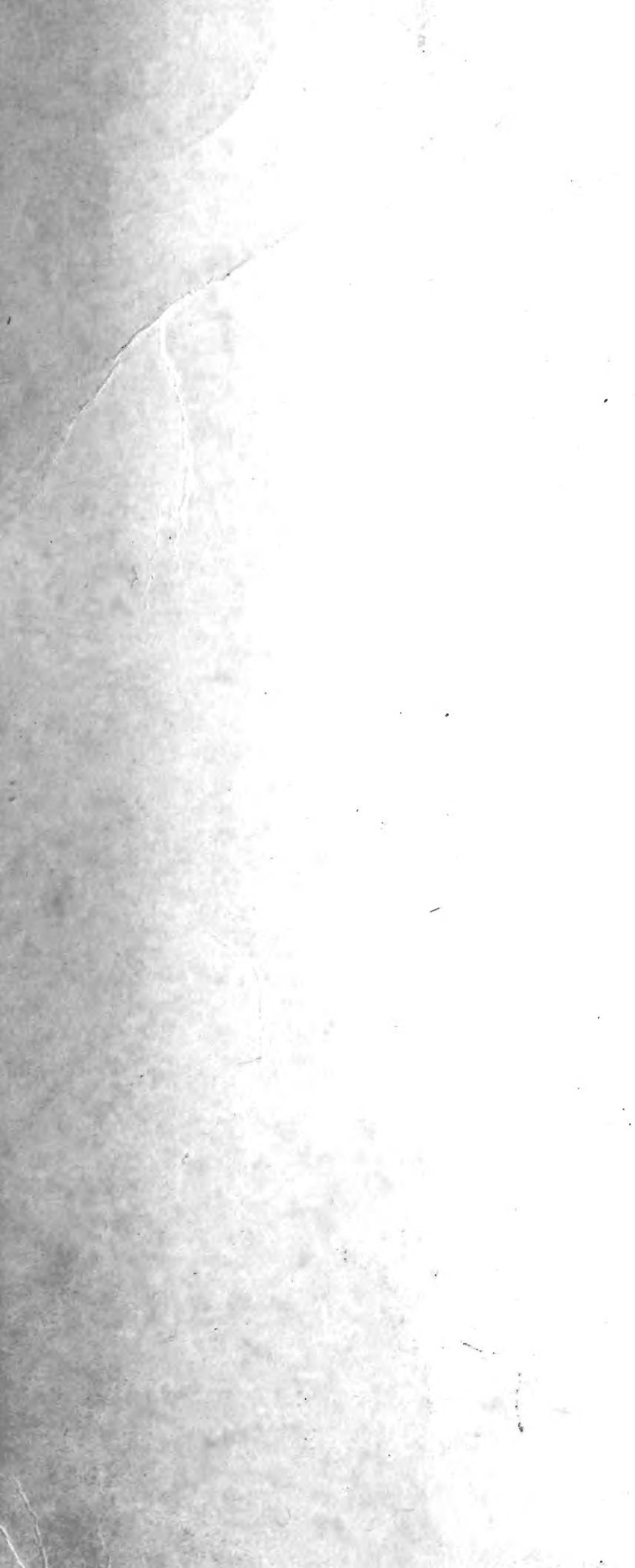
Mahan nuts showing size in comparison to an egg.

Be sure to get your Mahan trees direct from the originator—the Monticello Nursery Co.

PRICES ON MAHAN TREES

| | |
|------------------|-------------|
| 1 to 2 feet..... | \$2.00 each |
| 2 to 3 feet..... | 3.00 each |
| 3 to 4 feet..... | 4.00 each |
| 4 to 5 feet..... | 5.00 each |
| 5 to 6 feet..... | 5.50 each |
| 6 feet up..... | 6.00 each |

Monticello, Fla.





PEACHES

BELLE OF GEORGIA (Midseason). White skin with red cheek. White flesh, firm, and of excellent flavor.

ELBERTA (Medium late) Freestone. Juicy yellow flesh, yellow skin with red cheek. The most popular peach in America.

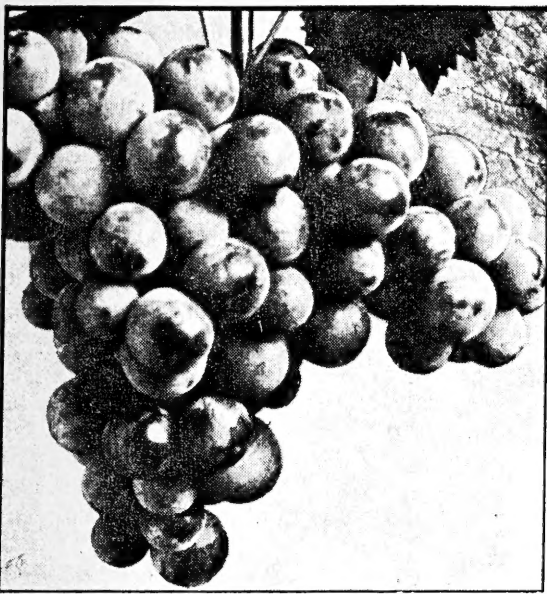
GOLDEN JUBILEE (Midseason). One of the heaviest yielding and best paying peaches. Bright orange with red blush. Flavor a real treat.

J. H. HALE (Medium late) Freestone. Extremely large fruit, extra fine quality and superior flavor. A golden yellow highly colored with crimson blush.

MAYFLOWER (Early). One of the strongest growers. Red flesh, white skin and is very rich and juicy.

RED HAVEN (Medium early). Trees bear young, fruit is freestone and self-pollinating. Ripens early and colors bright red before ripening.

| Above varieties: | Each |
|------------------|--------|
| 2-3 ft. | \$.85 |
| 3-4 ft. | 1.00 |
| 4-5 ft. | 1.25 |



GRAPES

CONCORD. The well known Blue bunch grape. Skin thin, flesh sweet.

NIAGARA: Greenish yellow fruit, small berries but extremely sweet.

2 Year vines \$.60

SCUPPERNONG. The old fashioned white or bronze variety. Agreeable musky flavor. Very long lived.

HUNT. Tender skilled black variety of Muscadine grape. Very prolific.

2 Year vines \$.90

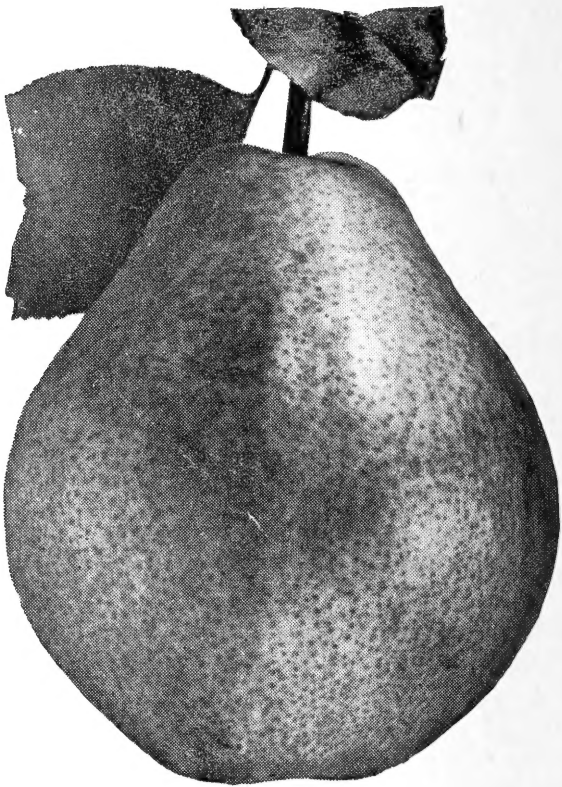


FIGS

CELESTE. The very sweet sugar fig best for the south.

BROWN TURKEY. Large, brown when ripe, probably more cold hardy.

| | Each |
|------------------|--------|
| 18-24 inch | \$1.00 |
| 2 to 3 ft. | 1.25 |
| 3 to 4 ft. | 1.75 |



ANDERSON PEAR

PEARS

ANDERSON. A NEW fine juicy eating pear, originating here at Monticello. Blight resistant, mellow and of excellent flavor.

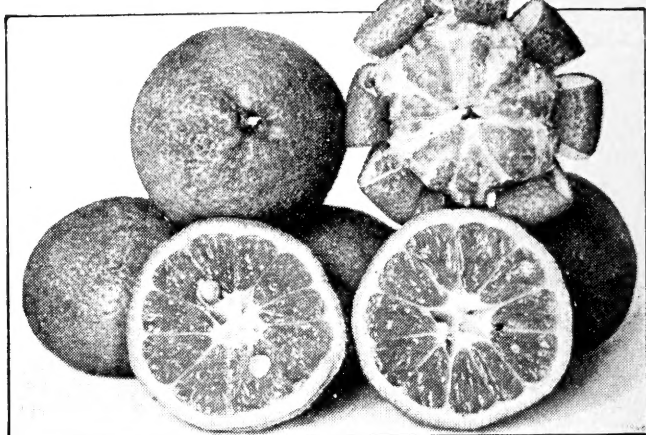
SEN. CLARKE. Another mellow eating pear well suited to the South. This is a very large pear, often weighing a pound.

| Price on above 2 varieties: | Each |
|-----------------------------|--------|
| 3 to 4 ft. | \$1.50 |
| 4 to 5 ft. | 2.00 |
| 5 to 6 ft. | 2.50 |

PINEAPPLE PEAR. The blight resistant pear widely planted for cooking and preserves. Extremely heavy bearer, and also quite ornamental.

| | Each |
|-----------------|--------|
| 3 to 4 ft. | \$1.00 |
| 4 to 5 ft. | 1.50 |
| 5 to 6 ft. | 2.00 |

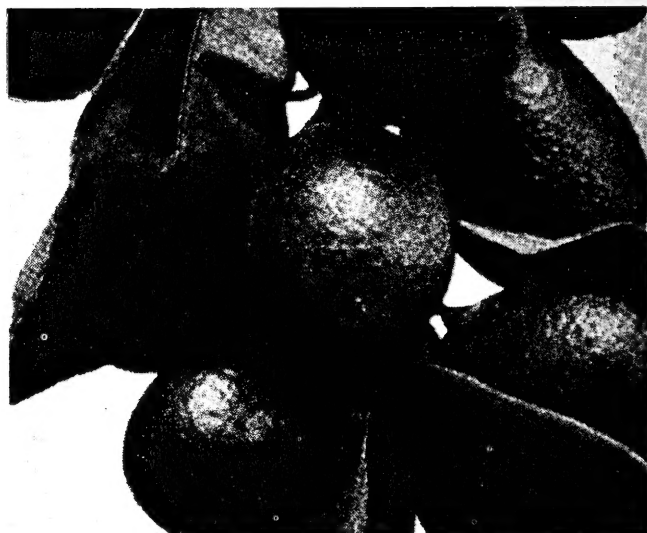




SATSUMA ORANGES

SATSUMA ORANGE. Those of you who have eaten tree ripened Satsumas know they are one of the sweetest and most flavorful of all oranges.

| | Each |
|----------------|--------|
| 18-24 in. | \$1.00 |
| 2- 3 ft. | 1.50 |
| 3- 4 ft. | 2.50 |

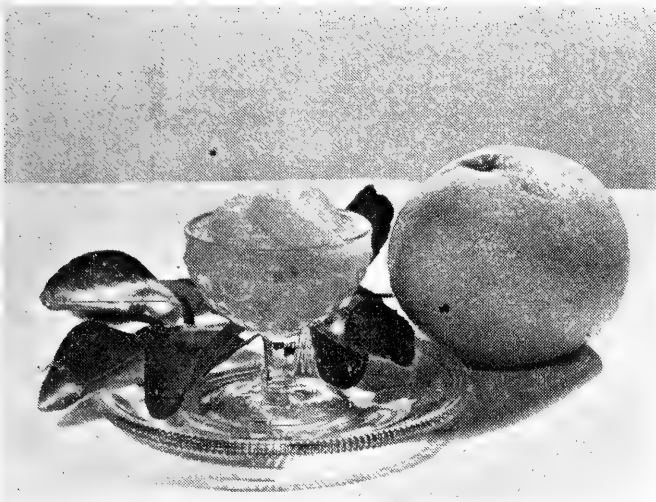


KUMQUATS

MARUMI. Small round, very ornamental fruit. Tree slow of growth, but compact and produces a profusion of fruit while still young.

NAGAMI. Vigorous, broadly upright, handsome. Fruit 1½ to 2 inches long, rind sweet, pulp and juice finely flavored. This tree forms a nice head.

| | Each |
|----------------|--------|
| 12-18 in. | \$1.00 |
| 18-24 in. | 1.50 |
| 2- 3 ft. | 2.50 |



GRAPEFRUIT

DUNCAN. One of the very best for all uses, lacking nothing required for the table or market. Of good quality, juicy. Hardest of all grapefruits.

| | Each |
|----------------|--------|
| 18-24 in. | \$1.00 |
| 2- 3 ft. | 1.50 |
| 3- 4 ft. | 2.25 |

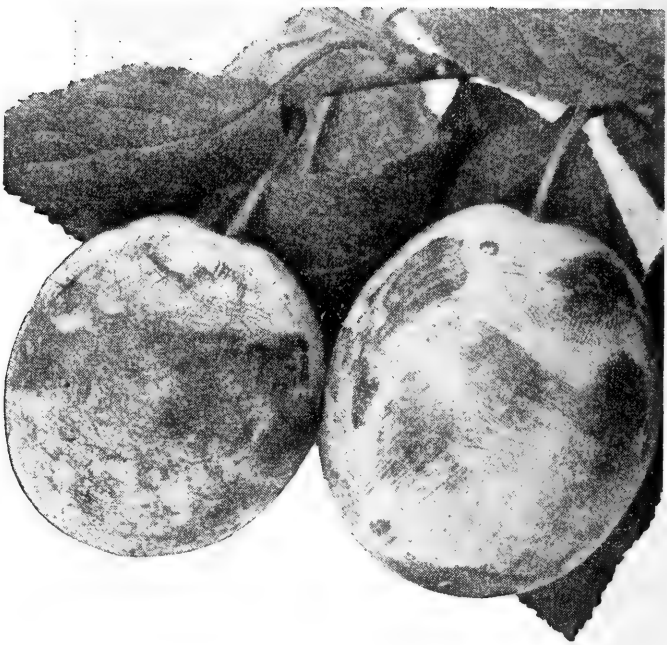


PERSIMMONS

TANE-NASHI. Large to very large fruit. Bright red when ripe. Yellow flesh and seedless. Prolific and bearing quite young. Probably the best variety.

FUYUGAKI. Tomato shaped fruit, medium to large, deep red skin and light flesh. Good keeper.

| | Each |
|-----------------|--------|
| 2 to 3 ft. | \$.75 |
| 3 to 4 ft. | .90 |
| 4 to 5 ft. | 1.00 |
| 5 to 6 ft. | 1.50 |
| 6 to 8 ft. | 2.00 |



PLUMS

ABUNDANCE. An early red plum with yellow flesh.

BURBANK. Dark red with yellow flesh, sweet flavor.

RED JUNE. The earliest sort.

| | |
|------------------------|--------|
| Above three varieties: | Each |
| 3-4 ft. | \$1.00 |
| 4-5 ft. | 1.25 |

APPLES

RED DELICIOUS—One of the finest eating apples.

RED JUNE—Medium size bright red, and early bearer.

WINESAP—Fine quality Red Apple. Crisp. Late.

YELLOW HORSE—Late summer, crisp, acid flavor.

YELLOW DELICIOUS—Sweet, highest quality.

| | |
|--------------|--------|
| | Each |
| 3-4 ft. | \$1.00 |
| 4-5 ft. | 1.25 |

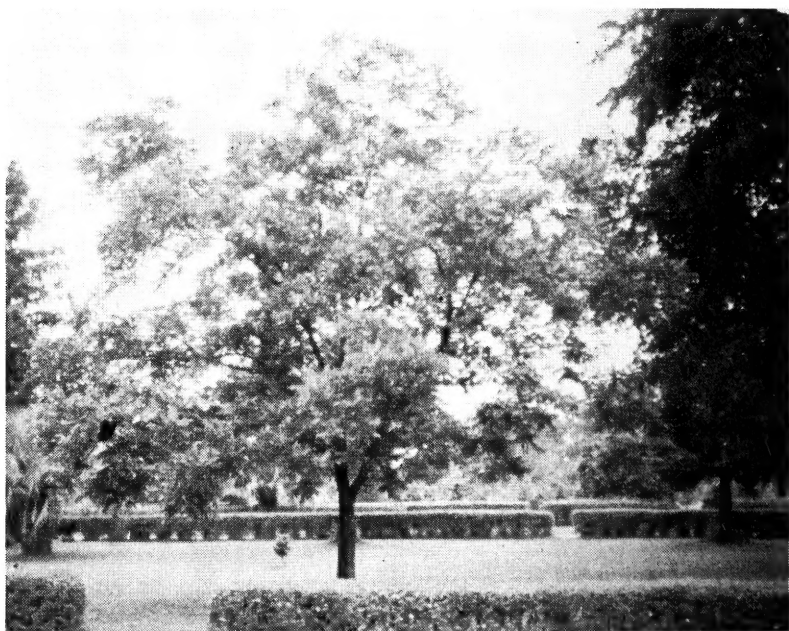
WHY NOT GROW YOUR OWN?

Your own yard can supply you with much of the fresh fruit and nuts you need, and they taste so good when ripened on the tree on your own place. Most fruits are quite pretty in bloom, and add beauty to your landscape as well as good eating to your table.





For a good income the rest of your life, we don't believe you can beat a pecan orchard of good varieties. This is an 18 year old orchard that made 675 pounds per acre last season.



Pecans make very nice shade trees, and then you get the nut crop too. You can just as easily have shade and pecans to eat and sell too.

How to Plant Bare-Rooted Plants and Trees

Trees lose part of their root system in transplanting, and it is best to cut part of the top back to balance up. The hole for planting should be dug deep enough and wide enough to accommodate the roots without cramping them. Side roots should be spread out in a natural position and not packed downward. Any broken roots should be pruned off, and the ends of any roots that are bruised should also be pruned back slightly. You can see where the soil-line on the tree is, and the trees should be set from $\frac{1}{2}$ to 1 inch lower than this soil-line. Use good top-soil, finely pulverized, in filling in. Put in some soil, then work it around the roots, keeping the side roots out sideways and not packing them downward. Pack the soil firmly around the roots when you put it in. When the hole is filled to within 2 to 3 inches of the top, fill it with water and let it soak down. Do this two or three times until you are sure the soil is thoroughly saturated to the bottom of the hole. Then, fill up the hole nearly to the ground-level with loose soil, and do not pack this.

Fertilizing

Almost any plant will do better if given a balanced fertilizer. Commercial fertilizer 5-7-5 formula is good on most garden shrubs, trees, and fruit and nut trees. This should be applied about the middle of March, or if the plants are set late in the spring, about two months after the plants have been set out. In this case plants set in March would be fertilized in May after the new roots had started to grow. The amount of fertilizer required varies with the size of the plant. A half pound per plant on the average 2 to 3-foot plants would be about right. Keep the fertilizer out about 6 inches to a foot from the trunk of the tree or plant, scatter it on top of the soil, and water it in.

TERMS OF BUSINESS:

All prices listed are F.O.B. Monticello, Fla. Terms Cash with order, or 25% cash, balance COD. Pecans larger than 2-3 ft. and fruit trees larger than 3-4 ft. must be shipped express as they are too large for Parcel Post. If your express office is different from your Post Office please note this on order. Unless otherwise specified trees will be shipped by express.

MONTICELLO NURSERY CO.

Monticello, Fla.

